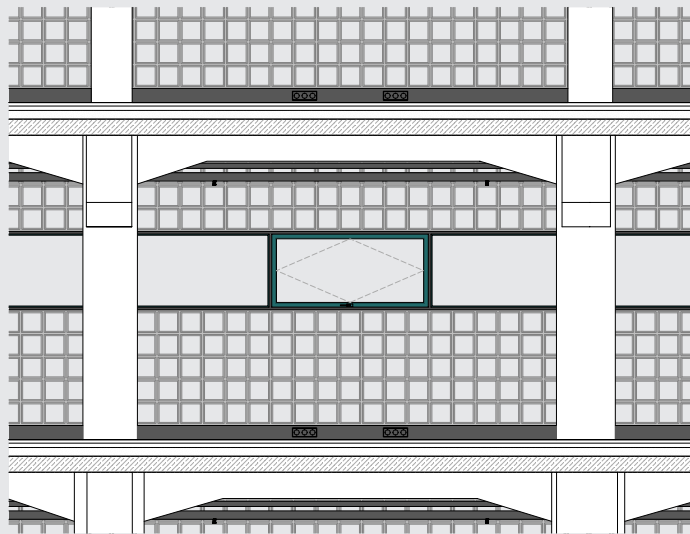
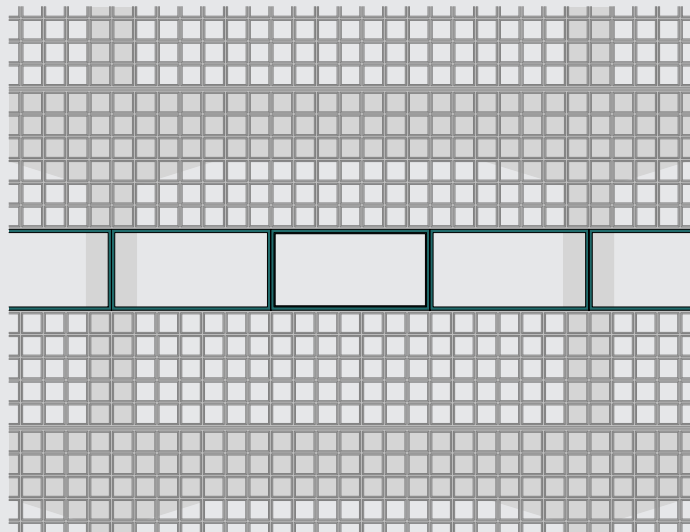


north

The glass facade consists of 70,000 glass blocks and extends over six floors with an area of over 1,800 m². In order to correspond to Behren's prevailing structure, all supporting steel constructions disappear inside the glass block joints and are only visible horizontally in the form of a supporting window. The steel windows, in turn, are divided into the specified grid of the listed concrete skeleton structure and allow natural ventilation through a pivoting sash opening, also a reference to the historical building. As a clear contour between the existing and the newly created, the entire glass brick facade is surrounded by a black steel band. A new canopy forms the lower end of the facade, which was also irrevocably lost when it was demolished in the 1960s.



facade inside



facade outside



A GLASS PALACE
OF CREATIVITY